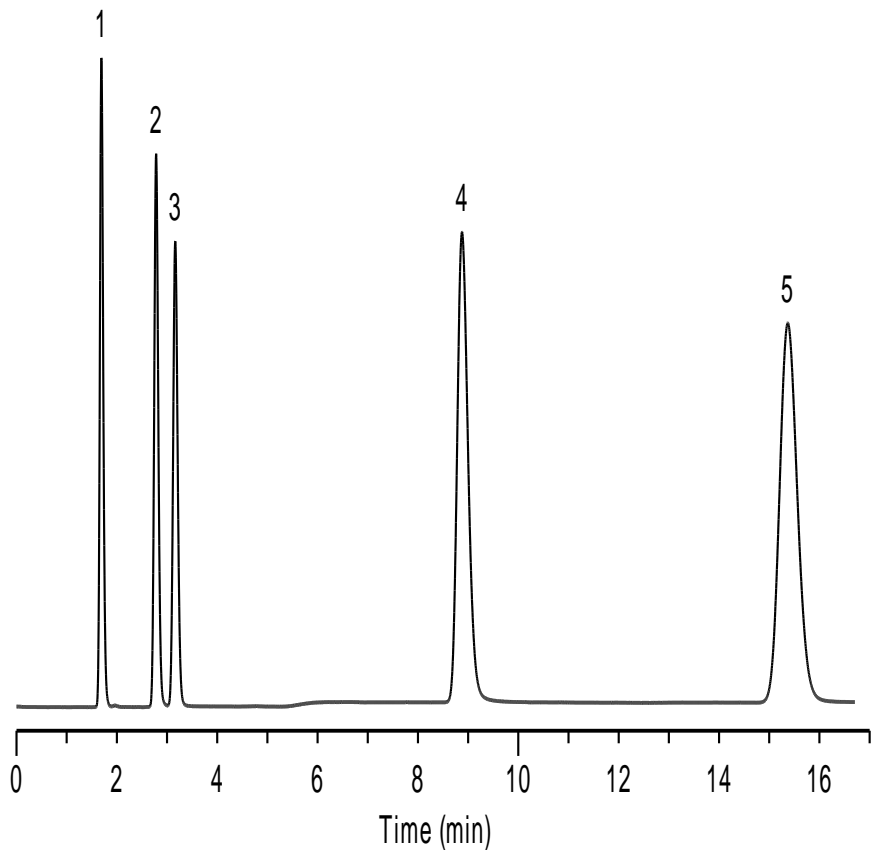


# Galushko Test

Columns: Listed on chromatograms  
Dimensions: 150×4.6mm 5μm(all columns)  
Mobile Phase: MeOH: H<sub>2</sub>O=60:40  
Flow Rate: 1.0ml/min  
Temperature: Ambient  
Detector: UV 254nm  
Sample: 1.Uracil  
2.Aniline  
3.Phenol  
4.Benzene  
5.Toluene

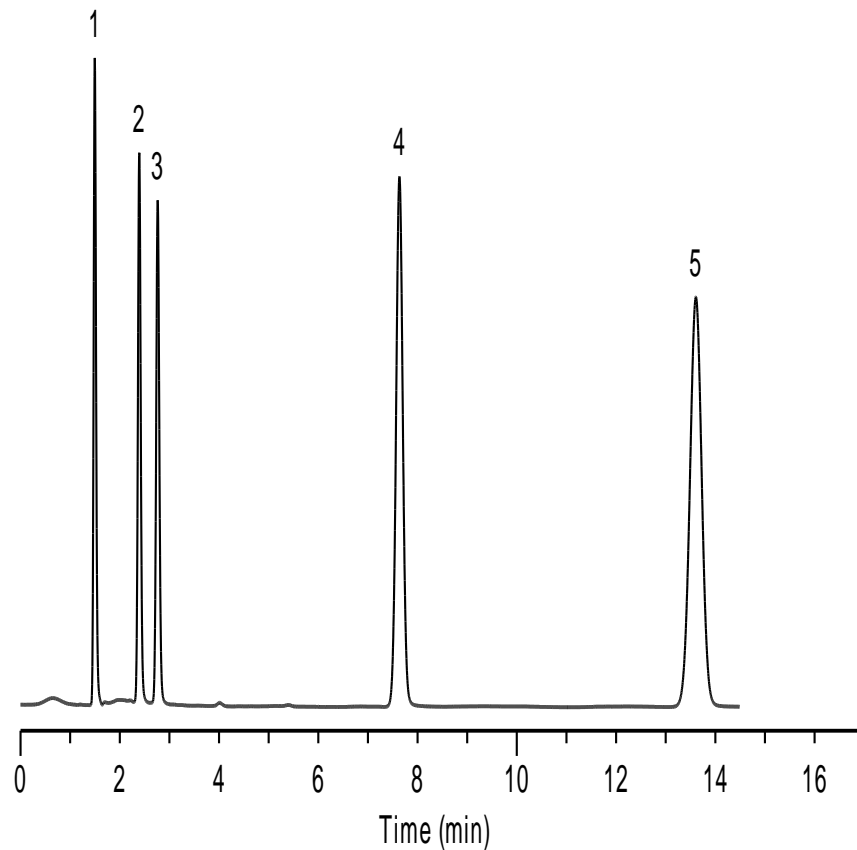
\*ZORBAX,HC,TC,Eclipse,Hypersil are registered trademarks of Agilent Technologies.Gemini,Luna are registered trademarks of Phenomenex.Symmetry,XBridge are registered trademarks of Waters Corporation.Inertsil is registered trademark of GL Sciences Inc.Kromasil is registered trademark of Eka Chemicals.BECKMAN Coulter is registered trademark of Beckman Coulter, Inc. SMT is registered trademark of Analtech Inc.Dikma Technologies is not affiliated with the above companies.

## Diamonsil C18



[China](#)

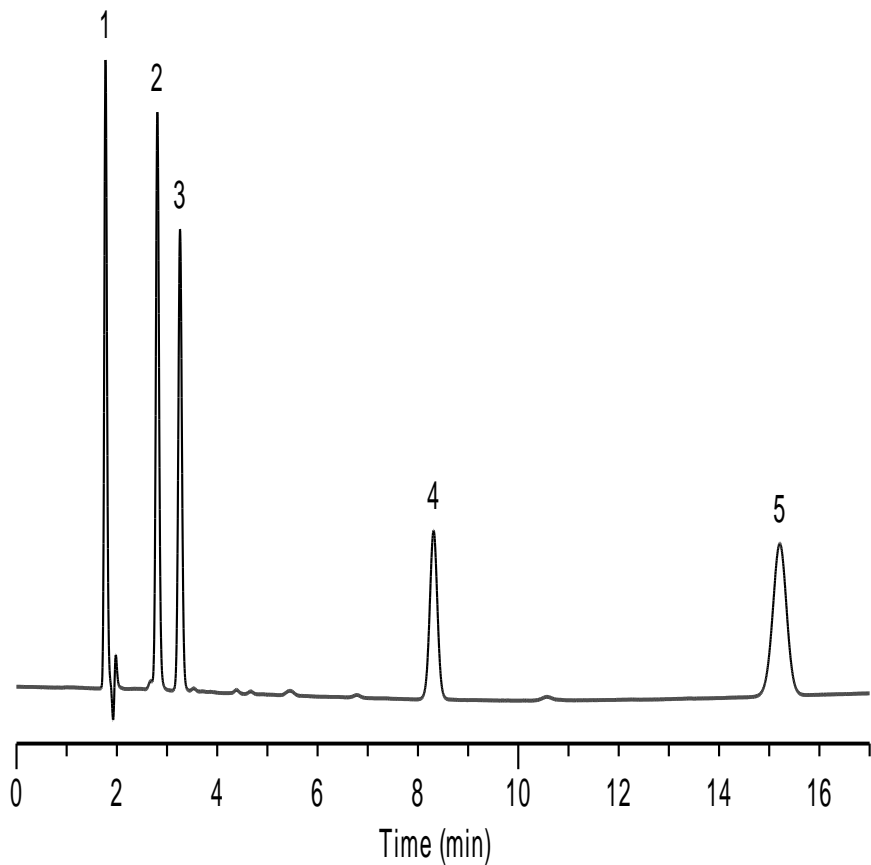
## Inspire



[Canada](#)

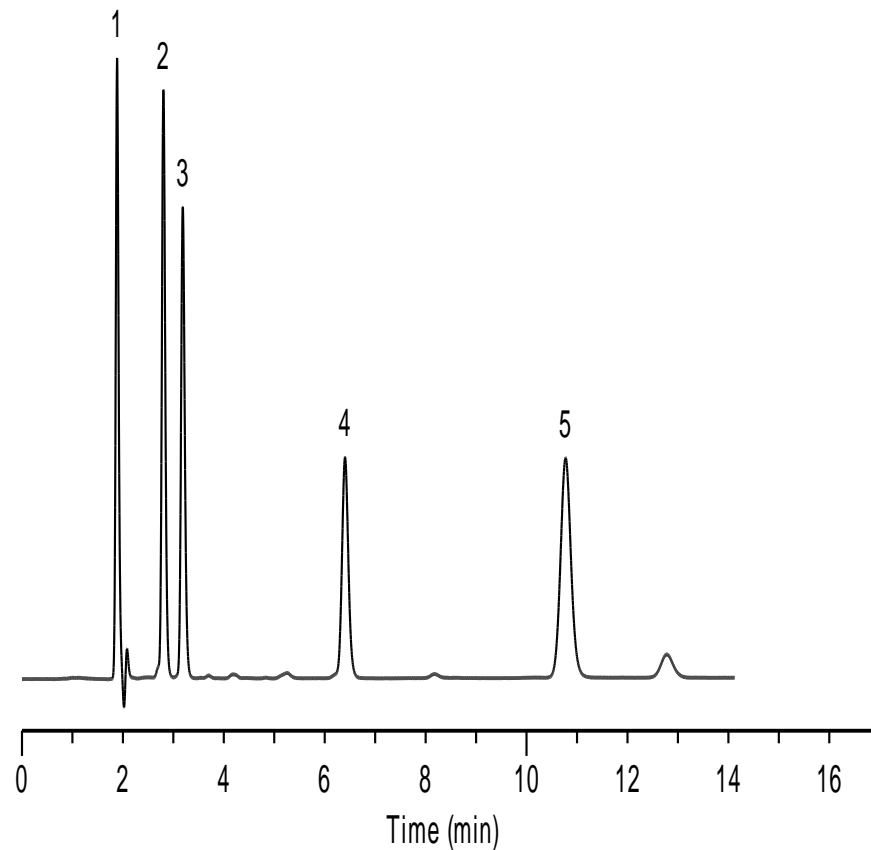
[US](#)

**\*Agilent HC-C18**



[China](#)

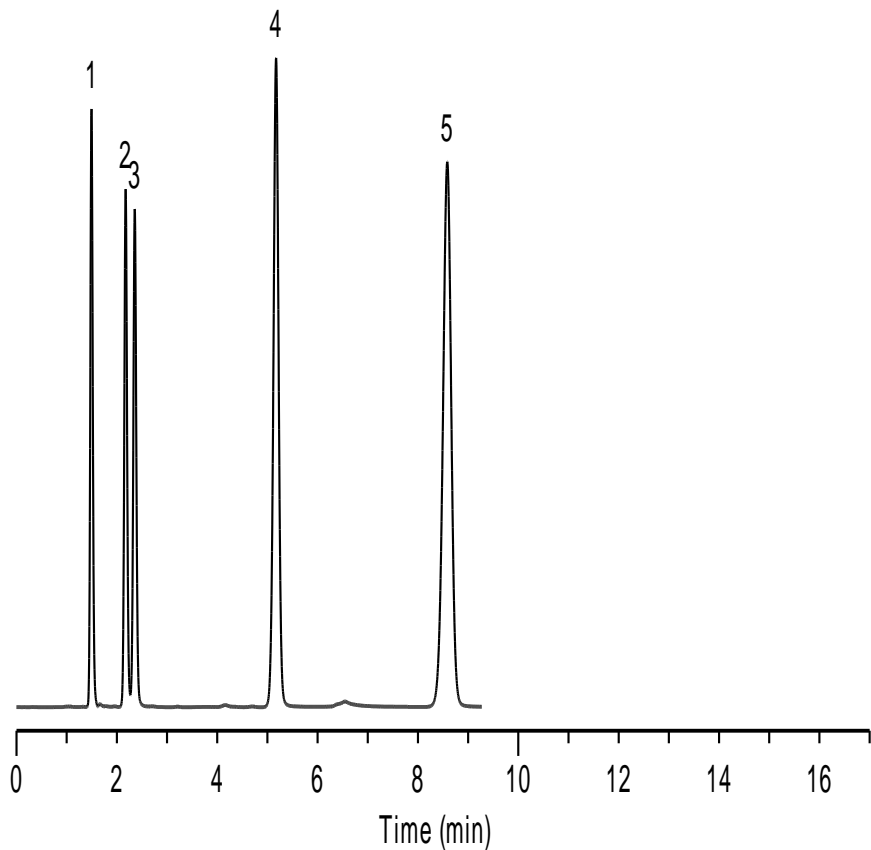
**\*Agilent TC-C18**



[Canada](#)

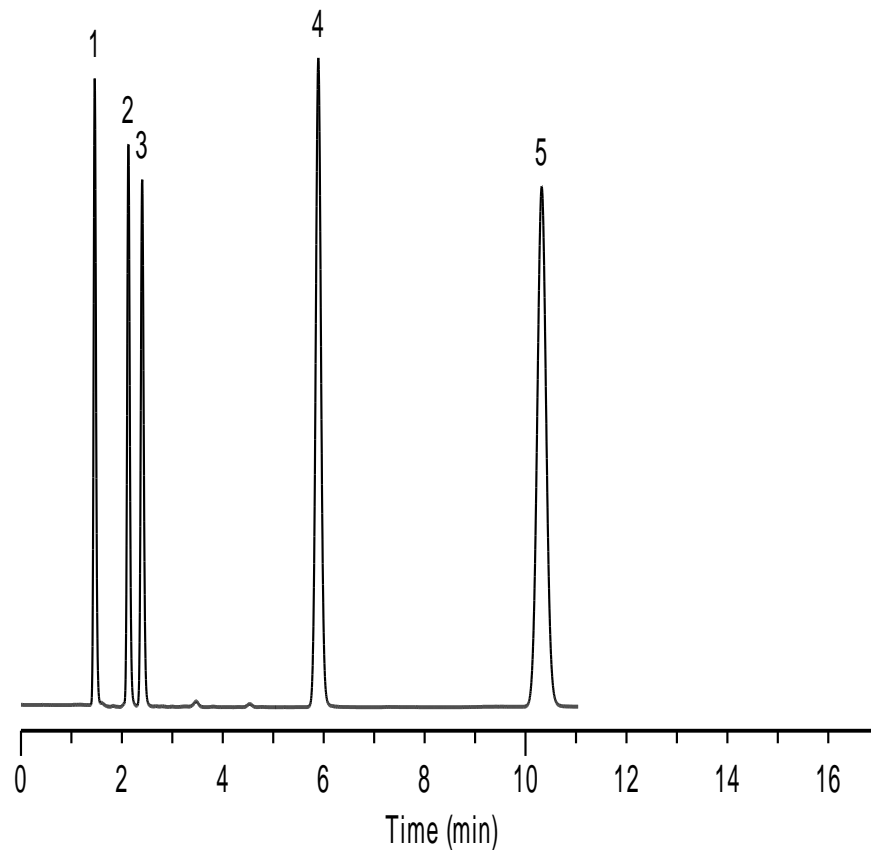
[US](#)

**\*Agilent Zorbax SB-C18**



[China](#)

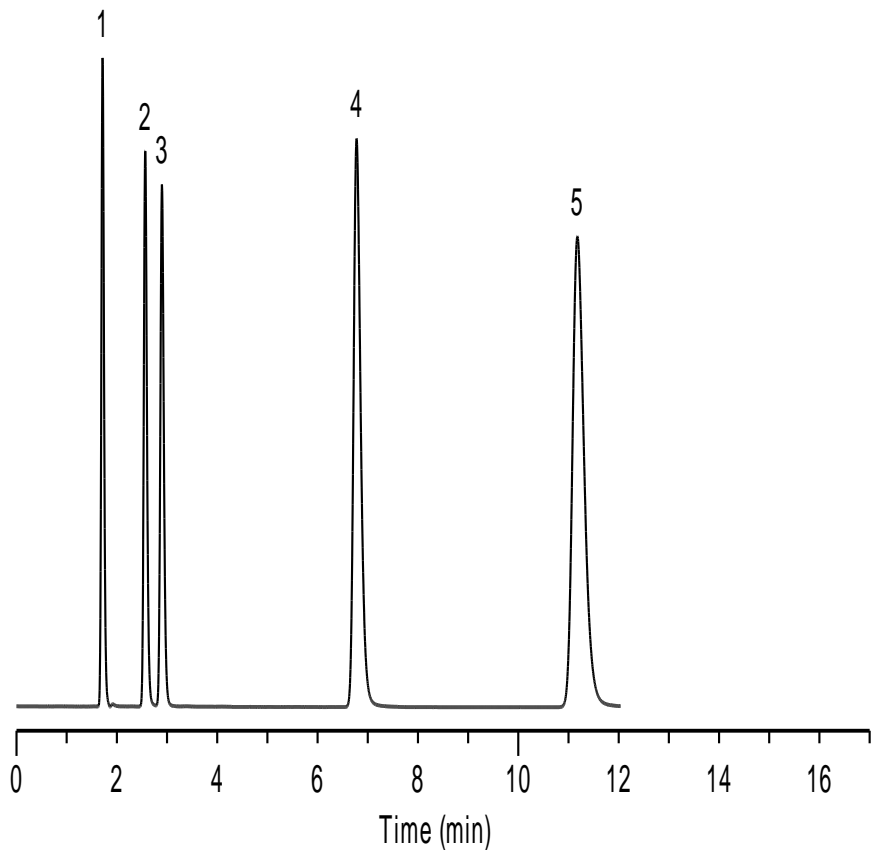
**\*Agilent Eclipse XDB-C18**



[Canada](#)

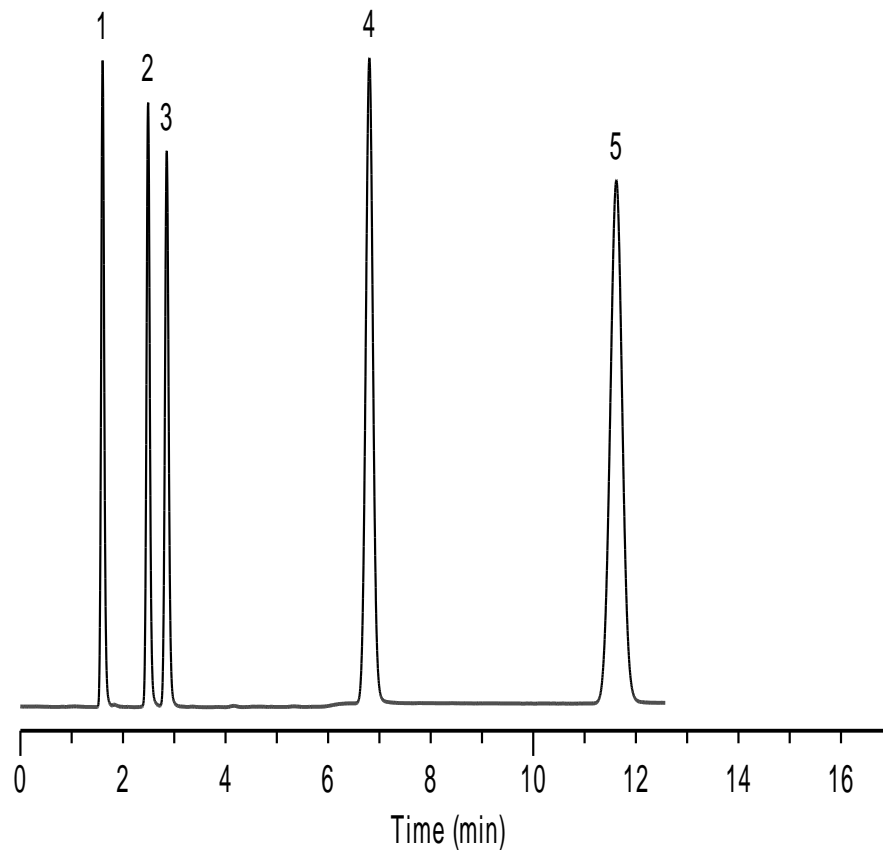
[US](#)

**\*Phenomenex Gemini-C18**



[China](#)

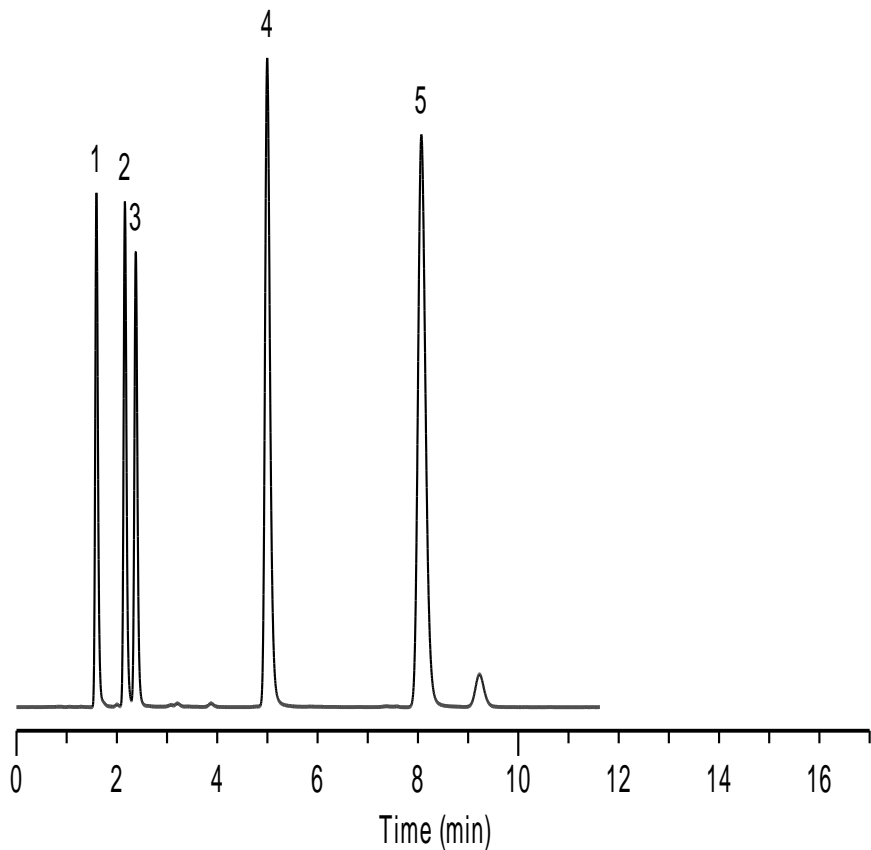
**\*Phenomenex Luna-C18(2)**



[Canada](#)

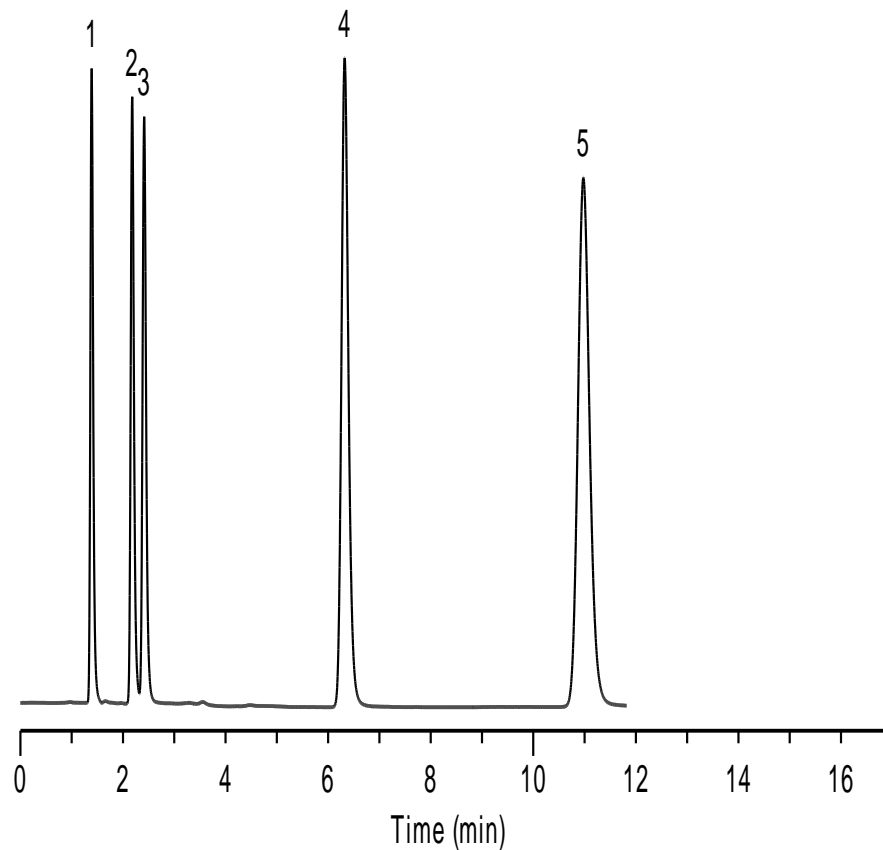
[US](#)

**\*Waters Xbridge-C18**



[China](#)

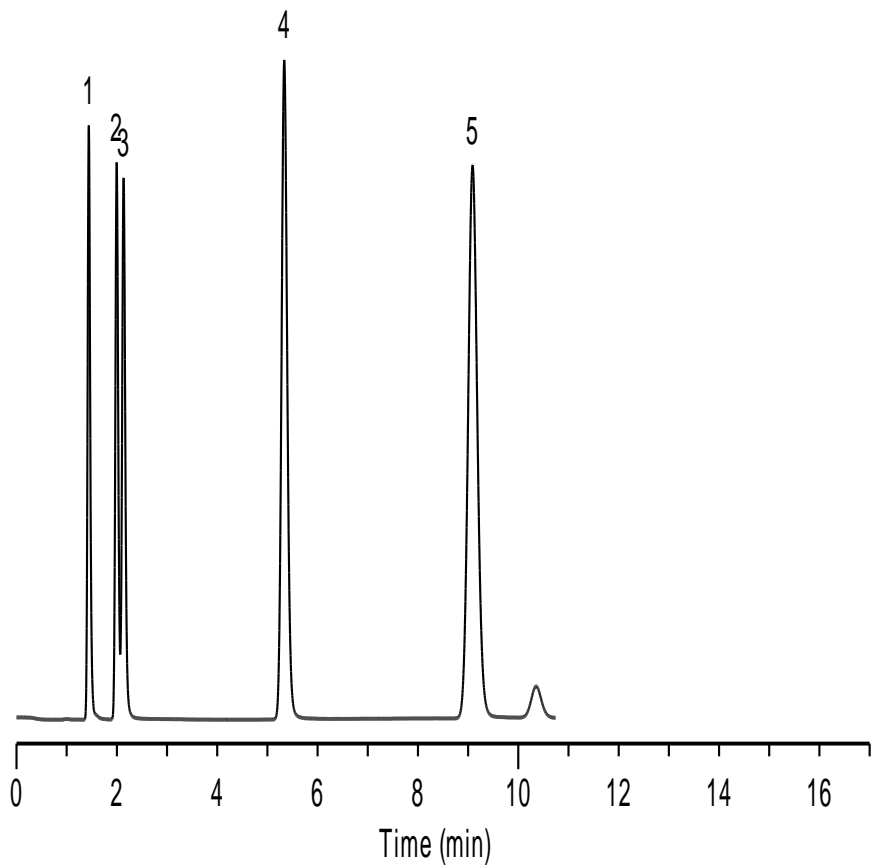
**\*Waters Symmetry-C18**



[Canada](#)

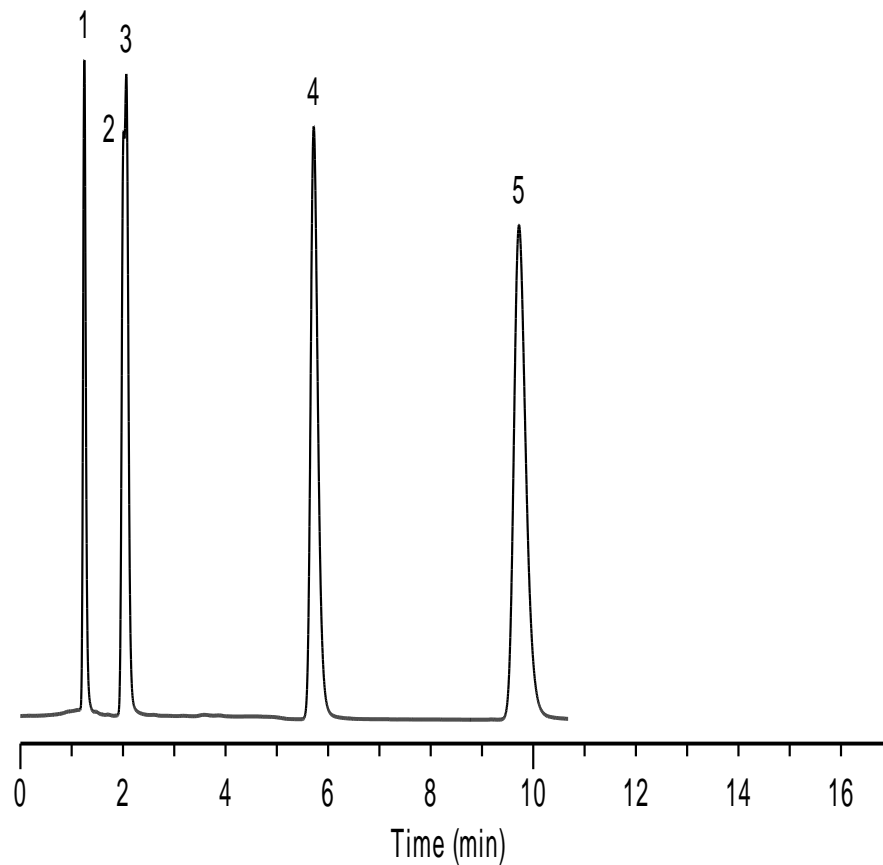
[US](#)

**\*BECKMAN Coulter-C18**



[China](#)

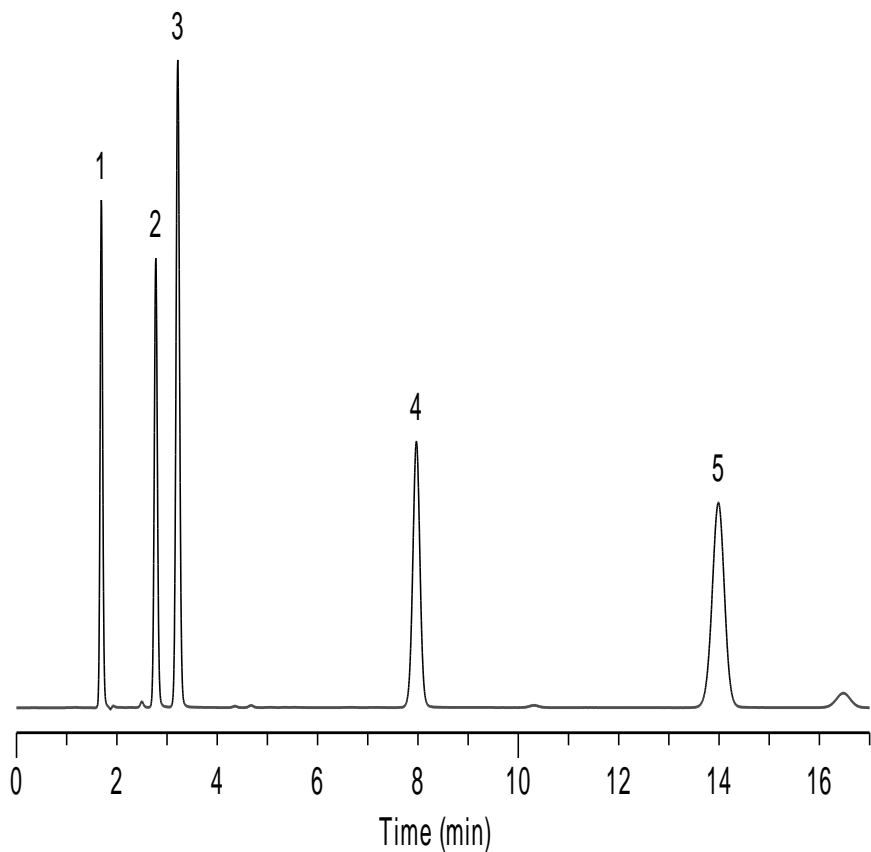
**\*SMT-C18**



[Canada](#)

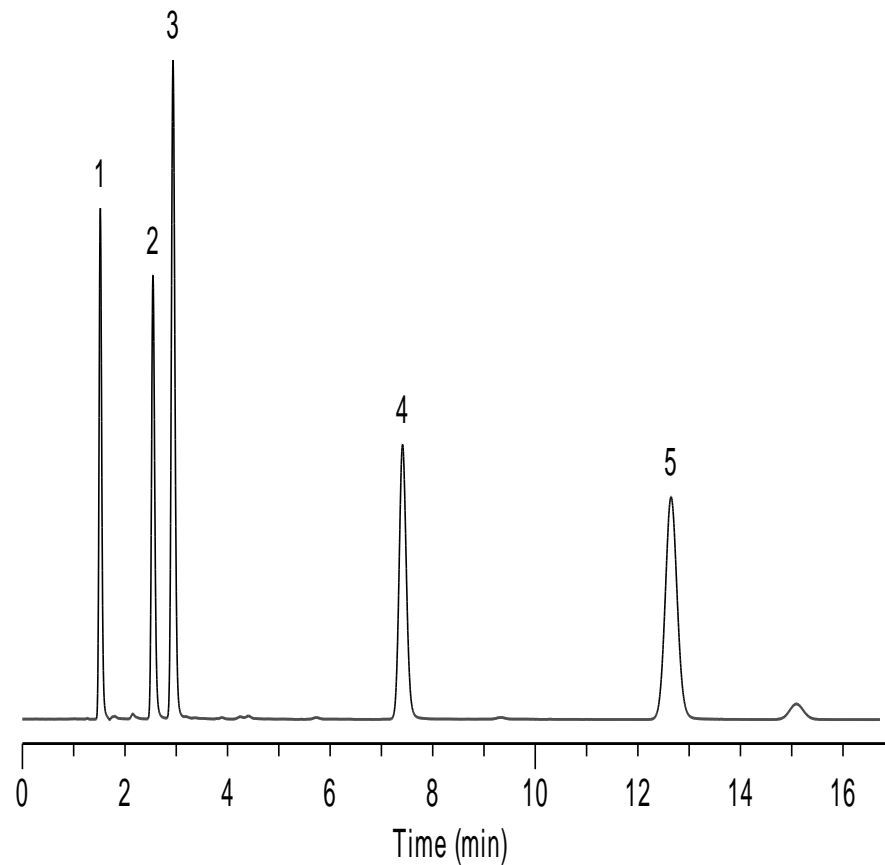
[US](#)

### Platisil C18



[China](#)

### Platisil C18(2)

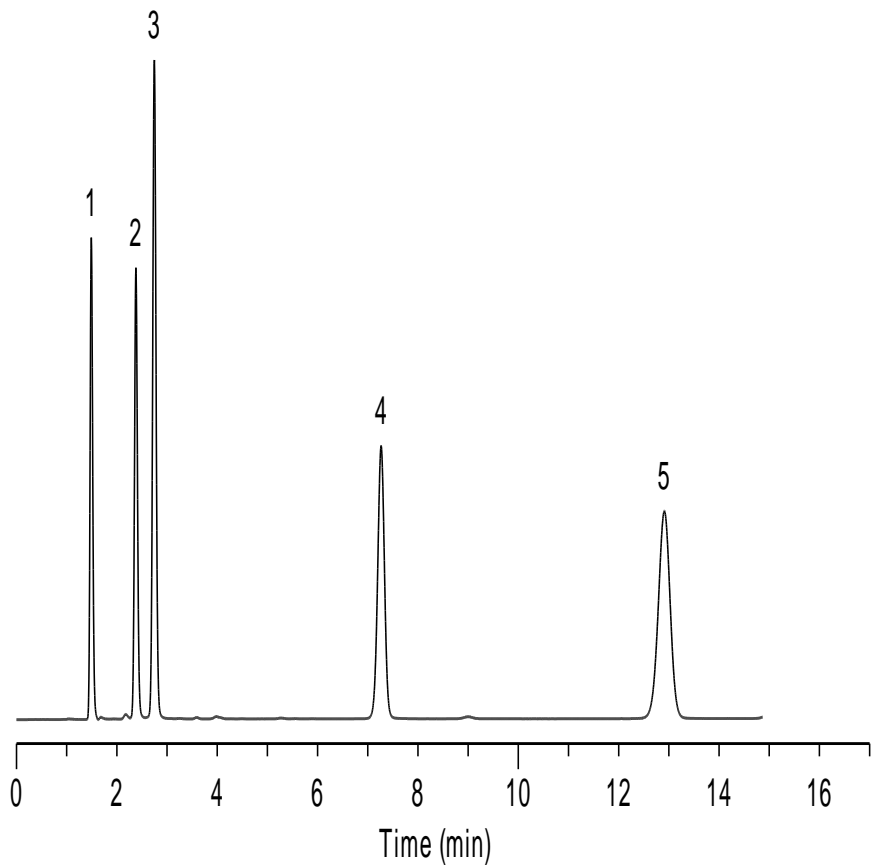


[Canada](#)

[US](#)

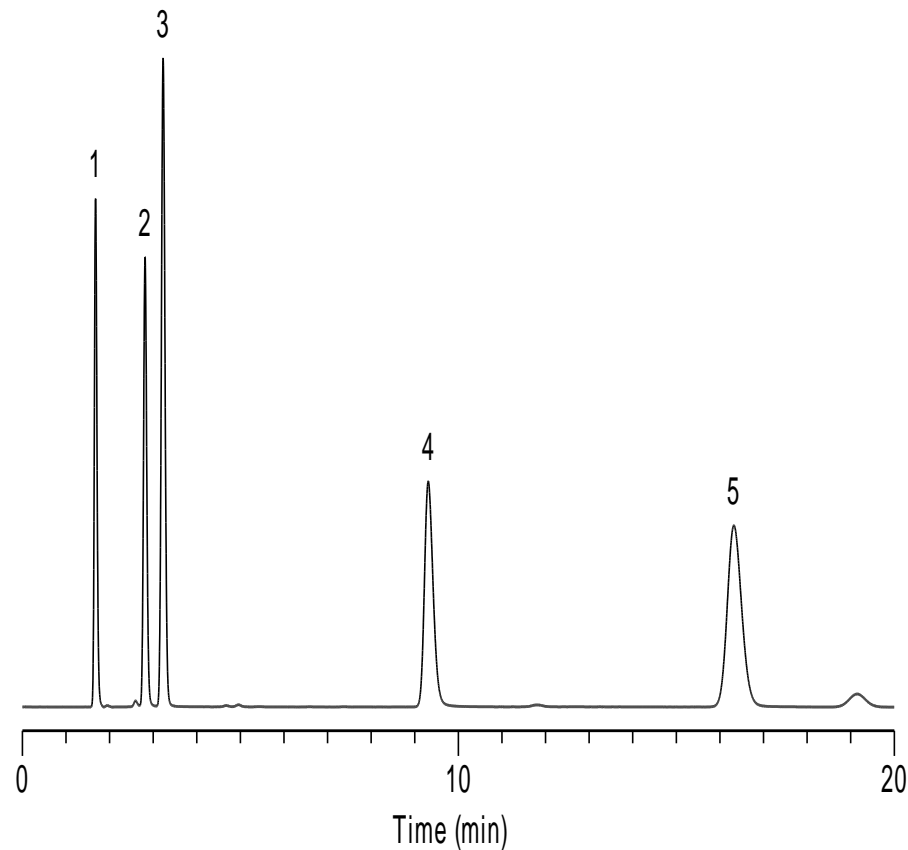


**\*Kromasil**



[China](#)

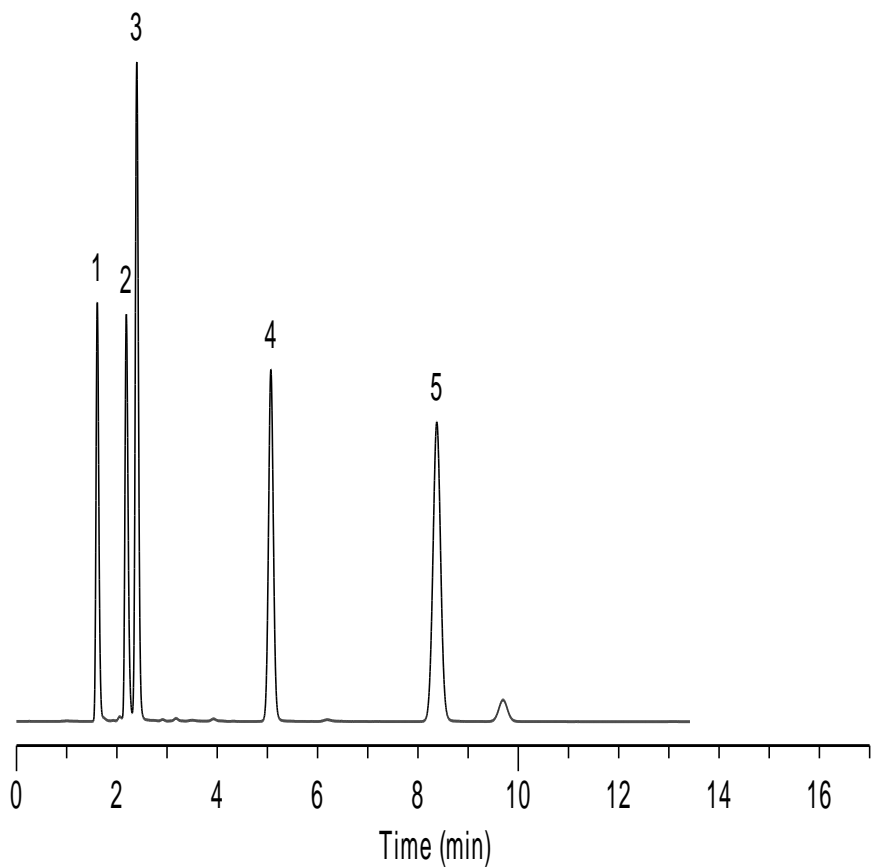
**\*Inertsil ODS-3**



[Canada](#)

[US](#)

## \*Hypersil BDS-C18



| <b>Column</b>            | <b><i>k</i>(aniline)</b> | <b><i>k</i>(phenol)</b> | <b><i>k</i>(aniline)/<i>k</i>(phenol)</b> | <b><i>k</i>(toluene)</b> | <b>N(toluene)</b> |
|--------------------------|--------------------------|-------------------------|---|--------------------------|-------------------|
| Diamonsil C18            | 0.645                    | 0.870                   | 0.741                                     | 8.089                    | 9016              |
| Inspire                  | 0.599                    | 0.848                   | 0.706                                     | 8.102                    | 15503             |
| *Agilent HC-C18          | 0.583                    | 0.838                   | 0.696                                     | 7.579                    | 13930             |
| *Agilent TC-C18          | 0.488                    | 0.692                   | 0.705                                     | 4.719                    | 13187             |
| *Agilent Zorbax SB-C18   | 0.455                    | 0.576                   | 0.790                                     | 4.745                    | 13369             |
| *Agilent Eclipse XDB-C18 | 0.457                    | 0.643                   | 0.711                                     | 6.064                    | 16053             |
| *Phenomenex Gemini-C18   | 0.496                    | 0.691                   | 0.718                                     | 5.521                    | 11752             |
| *Phenomenex Luna-C18(2)  | 0.553                    | 0.780                   | 0.709                                     | 6.253                    | 11519             |
| *Waters Xbridge-C18      | 0.357                    | 0.492                   | 0.726                                     | 4.067                    | 13776             |
| *Waters Symmetry-C18     | 0.570                    | 0.738                   | 0.772                                     | 6.908                    | 11563             |
| *BECKMAN Coulter-C18     | 0.386                    | 0.481                   | 0.802                                     | 5.311                    | 12140             |
| *SMT-C18                 | 0.617                    | 0.657                   | 0.939                                     | 6.808                    | 8545              |
| Platisil C18             | 0.642                    | 0.901                   | 0.713                                     | 7.276                    | 15210             |
| Platisil C18(2)-CN       | 0.677                    | 0.934                   | 0.725                                     | 7.331                    | 14184             |
| *Kromasil                | 0.597                    | 0.843                   | 0.708                                     | 7.664                    | 14496             |
| *Inertsil ODS-3          | 0.677                    | 0.924                   | 0.733                                     | 8.732                    | 11595             |
| *Hypersil BDS-C18        | 0.360                    | 0.489                   | 0.736                                     | 4.205                    | 14270             |